

EcoPack Lamella DAF 傾斜板置入式氣浮污泥刮除設備能提供更多接觸表面積,相對提升其使用效率.若接續前端的化學混凝動作,能分離刮除 95%的油脂,懸浮物與膠凝的 BOD.

經由化快慢混的膠凝污水由集合管與“超微細氣泡-white water”綿密混合,在均流入槽體後,被超微細氣泡包覆的膠凝污泥與油脂快速上浮,經由表面之刮除機構將其刮入污泥槽,以重力或幫浦排出.

排放清水部份(約 30%)由特殊幫浦(microbubble generator)混合微量空氣打入空氣溶解管(air dissolved tube-ADT),再均分與膠凝污水進入集合管. 膠凝污泥則由超微細氣泡包覆快速上浮由刮除機構將其刮入污泥槽. 清水則由多重組合的傾斜板(Parallel Lamella plate)下流,在於末端上流溢升到處理後清水槽體,以重力排出. 全自動與精密設計的結構,明顯的發揮其優越功能.

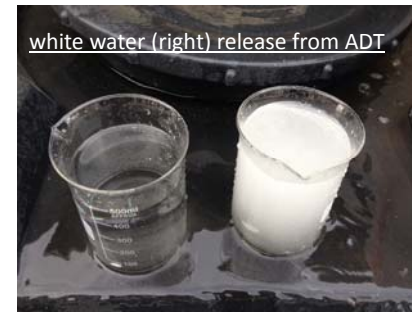
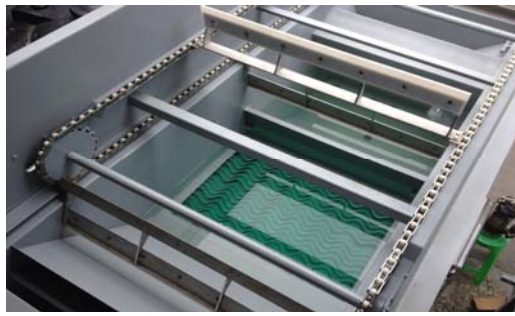


### EcoPack offers the following unique features:

- Proven technology
- Cost effectiveness
- Minimal space requirements
- Prevention and elimination of odors
- Above ground and accessible
- Few moving parts

### 適用範圍:

- 雞,鴉,豬等動物電宰污水
- 廣泛的各類食品加工污水
- 各型電子產業污水
- 續接終沉池排放水之 TSS 排除
- 鋼廠污水油脂氣浮刮除
- 工業區與石油化工污水
- 紡織染整,皮革與紙廠污水
- 河川,地下水體預先處理



### Dimension and Technical data

Model	Flow rate m <sup>3</sup> /h.(GPM)	Dimension L x W x H(mm)	Connect Schedule-Flange			
			Inlet	Outlet	Sludge	Drain
EcoPack-5	5.0(20)	2360 x 1300 x 2200	3"	4"	4"	2" x 2
EcoPack-10	10.0(40)	2660 x 1300 x 2200	3"	4"	4"	2" x 2
EcoPack-15	15.0(60)	2960 x 1300 x 2200	3"	4"	4"	2" x 2
EcoPack-20	20.0(80)	3260 x 1300 x 2500	4"	4"	4"	2" x 3
EcoPack-25	25.0(100)	3260 x 2100 x 2500	4"	6"	4"	2" x 5
EcoPack-30	30.0(120)	3560 x 2100 x 2500	4"	6"	4"	2" x 5
EcoPack-50	50.0(200)	4430 x 2100 x 2890	6"	6"	5"	3" x 5
EcoPack-60	60.0(240)	5150 x 2100 x 2890	6"	6"	4"	3" x 7
EcoPack-75	75.0(300)	6400 x 2100 x 2890	6"	6"	5"	3" x 9
EcoPack-100	100.0(400)	6870 x 2100 x 2890	8"	8"	6"	3" x 9

■ 槽體呎吋將因混凝污泥之濃度做變更(不另行通知)